



World Class Manufacturer of High Quality Petri Dishes

Environmentally Friendly STAR™ DISH

Our **sterile and particulate-free petri dishes** are made of crystal-clear, virgin, high molecular medical grade polystyrene produced by an ISO certified company. All dishes are *100% visually inspected*. Each lot undergoes a thorough **sterility testing** performed by an independent microbiological testing laboratory before a sterility certificate is issued. The testing procedure follows USP XXIV. Phoenix Biomedical has been ISO9000 registered since 1995.

We offer an upgraded and value-added packaging design. The cardboard inserts have been removed and two sterile REUSABLE AUTOCLAVABLE liners have been added to reduce contamination risk. **All 600 per case products contain 2 packs of 300 plates** wrapped in REUSABLE AUTOCLAVABLE liner each holding 12 AUTOCLAVABLE sleeves of 25 dishes. The innovative packaging simplifies the removal of the carton content and facilitates hygienic transfer technique to your laboratory or clean room.

The **STAR™ DISH** is the only laboratory product awarded the "ECO-LOGO" Environmental Seal of Approval. The Government of Canada grants this prestigious award to environmentally correct products.



Environmental Seal of Approval

90x15mm STAR™ DISH nesting ALPINE

The unique recessed lid on this dish offers excellent stacking stability and saves space. It works with most models of media pouring equipment, an absolute must for manual pourers. Four ventilation lugs on underside of lid allow for venting, and prevent condensation from developing and dripping onto culture. The extremely flat bottom allows a reduction in the amount of media required. Patented cross ribs on the bottom make the dish resilient and resistant to warpage when the media is poured at a high temperature. Excellent for performing colony counts, since ribs provide a useful border for making quadrants.

Mfr. No.	Product Description	Dimensions (cm)	Weight (kg)
360	90x15mm nesting ALPINE "stacking" with 4 vents & ISO mark 600 per case (24 sleeves)	57x38x39 cm	7.5 kg
361	90x15mm nesting ALPINE "stacking" without vents & with ISO mark 600 per case (24 sleeves)	57x38x39 cm	7.5 kg

90x15mm STAR™ DISH semi-nesting ALPINE

Most suitable for use with high speed media pouring machine. The recession on the lid has a smoother beveled angle allowing the dish to slide easily during automated pouring.

370	90x15mm semi-nesting ALPINE "semi-stacking" with 4 vents & ISO mark 600 per case (24 sleeves)	57x38x39 cm	7.5 kg
371	90x15mm semi-nesting ALPINE "semi-stacking" without vents & with ISO mark 600 per case (24 sleeves)	57x38x39 cm	7.5 kg

STAR™ DISH "SPACE & MEDIA SAVER"

Specifically designed for commercial media pourers. Due to its innovative design, the dish offers several advantages including saving on the amount of media used per plate, longer shelf life and elimination of the problem with drying and shrinking media. Its 13mm height saves storage space in the refrigerator and incubator for the end user.

308	90x13mm SPACE & MEDIA SAVER "semi-stacking" with 4 vents & without ISO mark 600 per case (24 sleeves)	57x38x36 cm	7.5 kg
-----	--	-------------	--------

Due to its smaller diameter, this dish is perfect for users who want to save on the amount of media poured, as well as on storage space in the refrigerator and incubator.

390	85x15mm SPACE & MEDIA SAVER "semi-stacking" with 3 vents & without ISO mark 600 per case (24 sleeves)	57x38x39 cm	7.8 kg
-----	--	-------------	--------



90x15mm STAR™ DISH

Shallower and smaller in diameter than all other 90x15mm dishes. Save on culture media. Excellent for performing colony counts, as the reinforcement ribs provide a useful border for making quadrants.

320	90x15mm "semi-stacking" with 4 vents & ISO mark 600 per case (24 sleeves)	57x38x36 cm	6.6 kg
321	90x15mm "semi-stacking" without vents & with ISO mark 600 per case (24 sleeves)	57x38x36 cm	6.6 kg
322	90x15mm "semi-stacking" with 4 vents & ISO mark (larger lip on lid skirt) 600 per case (24 sleeves)	57x38x36 cm	6.6 kg



100x15mm STAR™ DISH ALPINE "FULL SIZE"

Has an exact dimension of 100mm in diameter and 15mm in height, versus nominal 100x15mm petri dishes which are about 92mm in diameter. Ideal when a larger surface is required for culture and for antibiotic's sensitivity discs.

356	100x15mm ALPINE FULLSIZE "semi-stacking" with 4 vents & ISO mark 264 per case (12 sleeves)	44x30.5x34 cm	3.2 kg
-----	---	---------------	--------



90x15mm STAR™ DISH ALPINE 2 Sections

For simultaneous differential studies of organisms or media in a common environment. Overall costs are reduced by minimizing use of dishes, media and space.

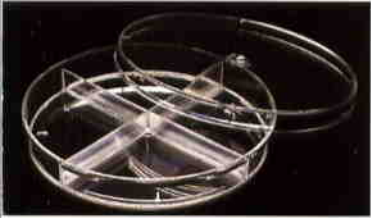
372	90x15mm ALPINE 2 Sections "semi-stacking" with 4 vents & ISO mark 600 per case (24 sleeves)	57x38x39 cm	7.6 kg
-----	--	-------------	--------



90x15mm STAR™ DISH Sectional Dishes

Ideal for simultaneous differential studies of organisms or media in a common environment. Individual compartments are numbered for easy identification. Overall costs are reduced by minimizing use of dishes, media and space.

331	90x15mm 3 Sections "semi-stacking" with 4 vents & ISO mark 600 per case (24 sleeves)	57x38x36 cm	7.7 kg
332	90x15mm 4 Sections "semi-stacking" with 4 vents & ISO mark 600 per case (24 sleeves)	57x38x36 cm	8.2 kg



90x20mm STAR™ DISH

Accommodates deeper media fills for longer culturing periods.

385	90x20mm "semi-stacking" without vents 384 per case (24 sleeves)	57x38x36 cm	7.4 kg
-----	--	-------------	--------

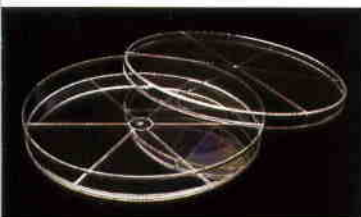


90x25mm STAR™ DISH "HIGH PROFILE"

Specifically designed to accommodate more media, excellent for mycology, histology and pathology labs, as well as, seed germination work. Particularly excellent if longer culturing periods are required.

002	90x25mm High Profile "semi-stacking" without vents 312 per case (24 sleeves)	57x38x37.5 cm	6.8 kg
-----	---	---------------	--------





140x15mm STAR™ DISH

Ideal for antibiotic susceptibility testing, accommodates 2 to 3 membrane filters in a single dish. It is large enough for bioburden determination and sterility testing of medical devices. It is extremely flat and has markings for placing up to 6 strips of Etest®.

041	140x15mm "semi-stacking" with 6 vents 120 per case (6 sleeves)	45x30.5x34 cm	3.7 kg
-----	---	---------------	--------



55x15mm STAR™ DISH

This dish saves space in refrigerators and incubators, and is ideal when small quantities of media are used. It accommodates single membrane filters for water and pharmaceutical testing.

058	55x15mm "semi-stacking" with 3 vents 600 per case (30 sleeves)	36x30x31 cm	3.6 kg
057	55x15mm "semi-stacking" without vents 600 per case (30 sleeves)	36x30x31 cm	3.6 kg



47x12mm STAR™ DISH "AQUA PLATE"

Ideal for membrane filtration techniques. It accommodates 47mm round membrane filter used for a variety of water testing and is best for field sample collection. Its tight-fitting lid can be easily sealed with tape. The well-designed "AQUA PLATE" is an intelligent alternative to Gelman or Millipore petri dishes.

352	47x12mm "semi-stacking" without vents 750 per case (30 sleeves)	36x30x31 cm	4.3 kg
-----	--	-------------	--------



40x12.5mm STAR™ DISH

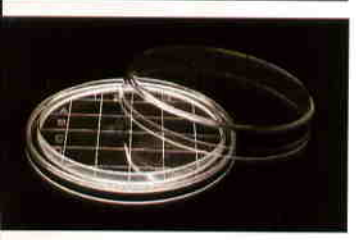
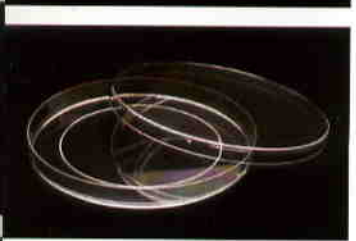
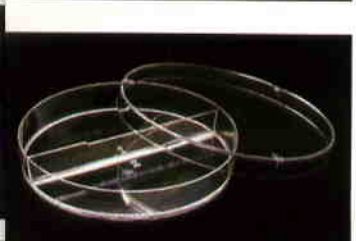
Ideal when only a very small sample is required, also suitable for use with small filters and in pharmaceutical analysis.

357	40x12.5mm "stacking" with 3 vents 720 per case (24 sleeves)	35x27x23 cm	2.8 kg
-----	--	-------------	--------

This is a universal catalogue; please note that petri dish referred to as 90x15mm in Europe, Middle East, Far East and Australia is EXACTLY THE SAME dish referred to as 100x15mm in North and South America. The exception is #356 which has an exact dimension of 100x15mm.



Conventional Petri Dishes And Specialty Plates



90x15mm Petri Dish

This dish offers distortion-free viewing making it ideal for microscopic examination. The controlled bottom flatness ensures even distribution of media and organisms. The semi-stacking ring has been specifically designed to make the dish versatile and suitable for different makes and models of pouring equipment.

Mfr. No.	Product Description	Dimensions (cm)	Weight (kg)
112	90x15mm petri dish with 3 vents & ISO mark 600 per case (24 sleeves)	57x38x39 cm	9.1 kg
113	90x15mm petri dish without vents & with ISO mark 600 per case (24 sleeves)	57x38x39 cm	9.1 kg
114	90x15mm petri dish with 3 vents & without ISO mark 600 per case (24 sleeves)	57x38x39 cm	9.1 kg

90x15mm Petri Dish

The semi-stacking ring on lid allows for easy transit during automatic filling. Available in the sliding version with a totally smooth lid.

018	90x15mm petri dish "semi stacking" with 3 vents and with ISO mark 600 per case (24 sleeves)	57x38x39 cm	9 kg
019	90x15mm petri dish "sliding" with 3 vents and with ISO mark 600 per case (24 sleeves)	57x38x39 cm	9 kg

90x15mm Petri Dish 2 Sections

Used for simultaneous differential studies of organisms or media in a common environment. The sections are numbered, aiding in orientation.

020	90x15mm petri dish 2 sections "semi-stacking" with 3 vents and ISO mark 600 per case (24 sleeves)	57x38x39 cm	9.6 kg
-----	--	-------------	--------

140x15mm Petri Dish

This classic design, similar to 140x15mm Star™ Dish is ideal for susceptibility testing and whenever a larger surface is required.

033	140x15mm "semi-stacking" with 3 vents 120 per case (6 sleeves)	45x30.5x34 cm	5.4 kg
-----	---	---------------	--------

Contact Plates with Grid

Used for testing bioburden counts on working surfaces. The domed surface and exclusive media gripping tabs, help the media to stick to the dish, reducing drop-off. A special double ring around the outside of the dish helps prevent fingers from touching the media, thus reducing the possibilities of contamination.

116	60x15mm Contact Plate "Domed Base" 600 per case (30 sleeves)	41.5x35x26 cm	6.0 kg
121	60x15mm Contact Plate "Flat Base" 600 per case (30 sleeves)	41.5x35x26 cm	6.0 kg

100x15mm Square Petri Dish with Grid

Features 13mm grid marked in both directions. Suitable for bacteriological typing, probe assays, colony counts, susceptibility testing or any research and bacterial culture work requiring a large surface area.

050	100x15mm Square Petri Dish with 13mm Grid 300 per case (15 sleeves)	57x38x39 cm	9.7 kg
-----	--	-------------	--------

Anaerobic Petri Dish

Specifically designed for anaerobic culturing. Molded pocket in plate base accommodates single CO₂ generating tablet and retains tablet residue. Pocket vents permit CO₂ to flow within closed chamber even if the chamber is inverted. Plate may be opened or closed using one hand, leaving other hand free to inoculate.

080	90x15mm Round Pill Pocket "semi-stacking" 500 per case (25 sleeves)	50x50x31 cm	6.8 kg
069	75x50x10mm Rectangular Pill Pocket "semi-stacking" 600 per case (24 sleeves)	35x35x29.5 cm	6.8 kg



World Class Quality

About Phoenix Biomedical

Phoenix Biomedical was founded in 1980 expressly to manufacture high-quality sterile petri dishes. Today, Phoenix is the industry leader and supplier of choice for major distributors, diagnostic device manufacturers, hospitals, industrial laboratories and research institutions. Our state-of-the-art plant in Mississauga, Ontario, with its class "100" clean rooms, is considered the finest petri dish facility in the world producing 200 million plates per year sold in 50 countries. One of the most outstanding features of Phoenix petri dishes is the total absence of particles, dust, foreign objects, hydraulic oil vapour which mask analysis results and give erroneous reading.

About Our R&D and the Environment

Of particular interest is the innovative environmentally friendly STAR™ DISH series. The patented technology incorporated in the STAR™ DISH allows a substantial reduction in the amount of plastic used to manufacture each dish, thus further reducing disposal waste and cost. The dish is excellent for performing colony counts, since the ribs provide a useful border for making quadrants. Phoenix Biomedical adheres strictly to all GMP requirements and is ISO 9000 registered.



Phoenix Biomedical Products, Inc.

7085 Tomken Rd, Mississauga,
Ontario, Canada L5S 1R7

Tel: (905) 670-8299 • Fax: (905) 670-0195

E-mail: stardish@phoenix-biomed.com

www.phoenix-biomed.com

